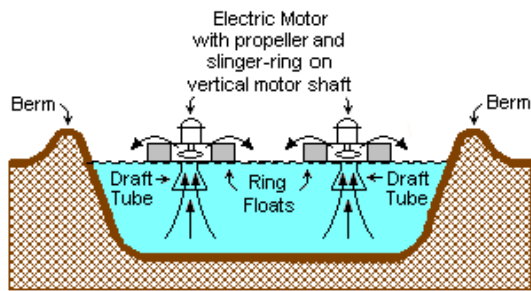


Platteville Sewer Lagoon



Located between Reynolds and County Road 32 1/2 east of Sterkel, the sewer treatment lagoon operates through a process where influent (incoming sewage) is pumped through aerated lagoons contain-

ing biologic ingredients that break down and degrade contaminants in the water. Once the contaminants are removed, and the water passes a strict testing process, it is released back into the river.



Surface Aeration

This diagram shows how the aeration process works. If any material that will not degrade is mixed with the water, the propeller motor will clog, and the system will shut down, leading to costly repairs.

You can eliminate this problem!

NEVER flush these items down your toilet or drain:

- Diapers or baby wipes*
- Cleaning wipes*

* **often labeled “flushable” but they are not!**

- Cotton balls or swabs
- Feminine hygiene products
- Facial tissue or paper towels
- Bandages or Medications
- Automotive fluids
- Cooking oil or grease
- Paint or solvents
- Cat litter or animal waste

Learn more at:

<https://www.youtube.com/watch?v=SLTVqkXVvNk>



Use water and sewer utilities wisely



Save water

Save money

Avoid costly and
troublesome
repairs!



Town of Platteville

400 Grand Avenue
Platteville, CO 80651

Phone: 970-785-2245

Fax: 970-785-2476

www.plattevillegov.org

Town of Platteville



And help the
environment
at the same
time...

We'll show you
how!



Why use more than you need?

small changes = **BIG** savings

A leaky faucet can waste 100 gallons each day



On average, 10 gallons of water is wasted on leaks in every home every day—
STOP the leaks and save the water!



An average bath uses 37 gallons of water—
Taking a shower lasting 5 minutes or less and using a low flow shower head can save up to 15 gallons of water.



Switching to a water-efficient washer can save up to 20 gallons on every load.



Hand washing dishes can take up to 20 gallons—
An EnergyStar dishwasher uses 4 gallons per load

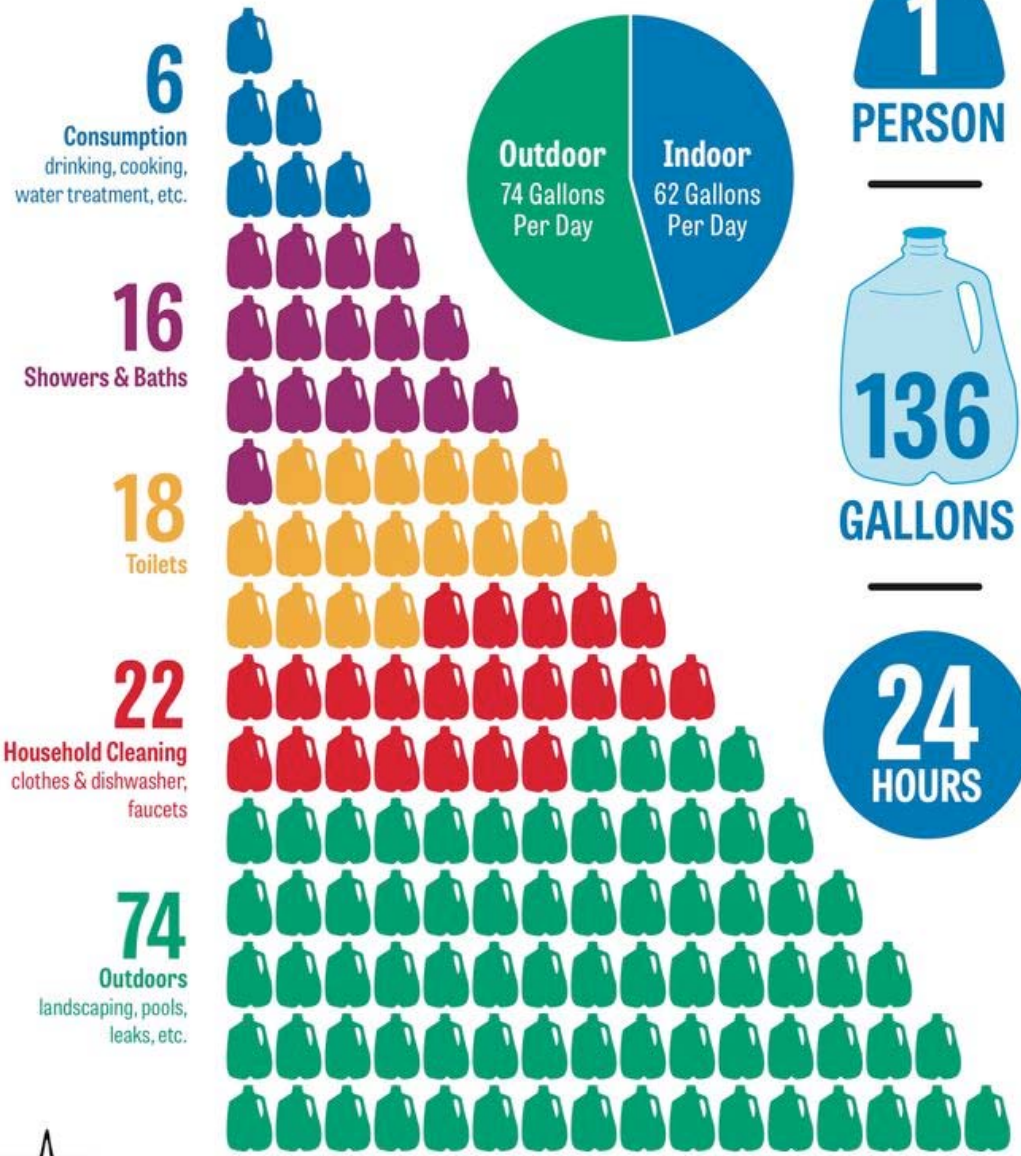
Play your part, be water smart!

Wise Water Use



Save it, or do without it!

Average Daily Water Usage



$$\text{Gallons Used This Month} \div \text{Number of People} \div \text{Days in the Month} = \text{Gallons per Person per Day}$$